

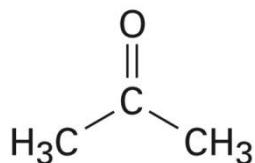
Name \_\_\_\_\_

Date \_\_\_\_\_

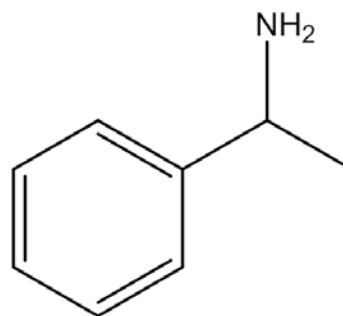
For each of the molecules shown below,

- 1) Write the chemical formula of the compound.
- 2) Build a 3D model of the molecule.
- 3) Sketch a perspective drawing of molecule A only
- 4) Identify geometry of **each** C.
- 5) Using clues included, determine the common name of the molecule.
- 6) Identify any functional groups present.
- 7) Look up the IUPAC name for the compound.

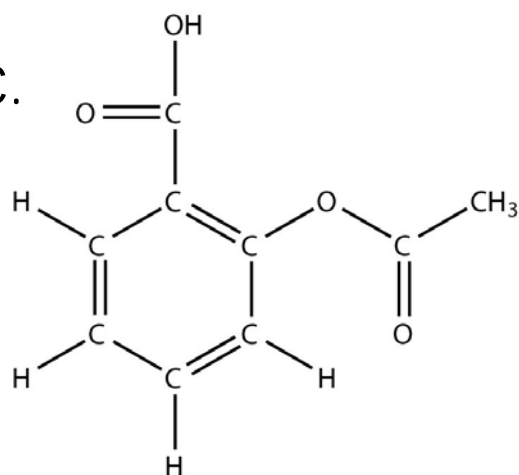
A.



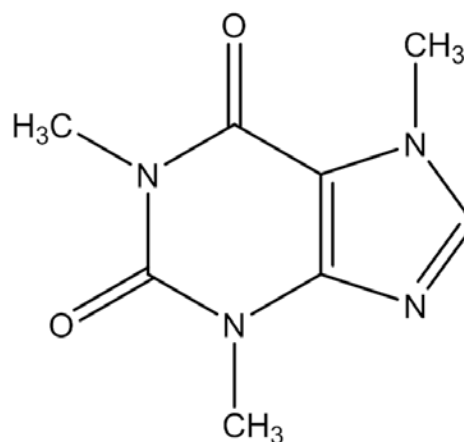
B.



C.



D.



Name \_\_\_\_\_

Partner \_\_\_\_\_

Data Table:

Molecule	A	B	C	D
Chemical Formula				
Geometry of C (list each once and how many if multiple)				
Clue	organic solvent in nail polish remover	psychoactive stimulant in chocolate	fever/pain reliever derived from willow bark	stimulant in chocolate, coffee & tea
Common Name		(NONE)		
Functional Groups (see inside cover of textbook)				
IUPAC Name (Google: list academic source)				

Perspective Drawing of Molecule A:

**THIS DATA SHEET IS DUE MONDAY, JAN 8th at the BEGINNING of class.**